



STAMPS

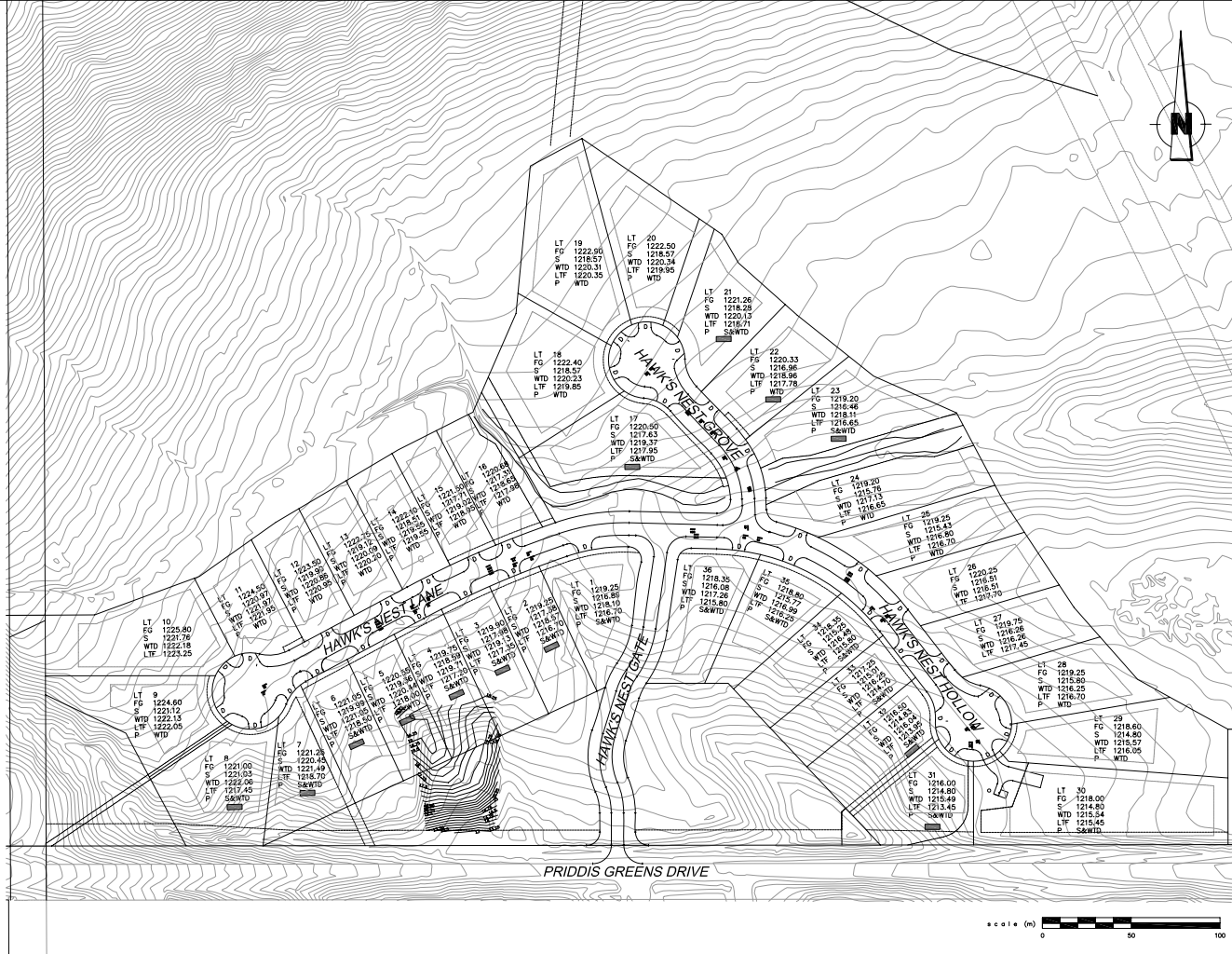
LEGEND

- FG SUGGESTED FRONT GRADE
- S SANITARY SEWER INVERT 3.0m INSIDE PROPERTY
- WTD WEeping TILE (STM) INVERT 3.0m INSIDE PROPERTY
- LTF LOWEST TOP OF FOOTING
- PRV PRESSURE REDUCING VALVES REQUIRED
- P PUMPED SANITARY OR WEeping TILE SERVICE
- W WALKOUT BASEMENT
- WT WALKOUT TERRACE
- [Symbol] SUGGESTED BUILDING FOOTPRINT
- D DRIVEWAY LOCATION
- [Symbol] INSULATED SERVICE

NO.	DATE	DESCRIPTION
8	12/07/2007	AS-BUILT
7	08/27/2007	UPDATED SERVICE INVERTS (THE NEST)
6	06/29/2007	REVISED GRADING PLAN FOR THE NEST REVISED DRIVEWAY AND SERVICES
5	06/20/2007	MOVED DRIVEWAY LOCATION FOR LOT 5 IN THE TIMBERS & ROAD NAME CHANGE
4	02/15/2007	ISSUED FOR CONSTRUCTION ADDED STREET NAMES
3	02/08/2007	ADDED BUILDING SETBACK ADDED TOP OF SLOPE
2	01/26/2007	GENERAL REVISION-SERVICE INVERTS BLDG ENVELOPE AND DRIVEWAY PLAN

REVISIONS

JOB NO.:	3471.5	FILE:	3471.5-OVERALLS-R13
SCALE:	1:2000	DATE	
DRAWN BY:	P.J.		2006/09
DESIGNED BY:	J.B.		2006/09
CHECKED BY:	J.B.		2006/09
APPROVED BY:	J.B.		2006/09



**AS-BUILT**



BelMK Engineering Ltd.  
5151 - 3rd Street S.E.  
Calgary, Alberta T2H 2X8  
f.403 269 7440  
f.403 269 7422  
www.mmm.ca

PROJECT TITLE:  
**PRIDDIS CREEK DEVELOPMENTS LTD.  
496290 ALBERTA LTD.**

**HAWKS LANDING  
PHASE 3**

DRAWING TITLE:  
**OVERALL GRADING PLAN**

DRAWING NUMBER:	3471.5-C105	REVISION	8
-----------------	-------------	----------	---